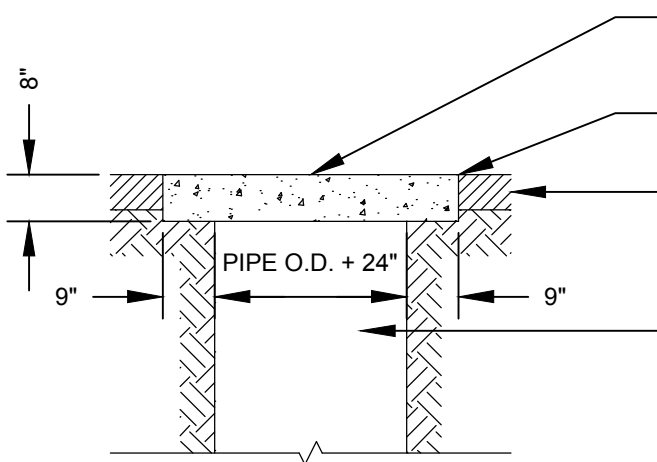


NEW GROUND COVER TO MATCH EXISTING GROUND COVER

SELECT EARTH BACKFILL PLACED IN 6" LIFTS AND COMPACTED TO MINIMUM 95 PERCENT OF MAXIMUM DRY DENSITY IN ACCORDANCE WITH ASTM D698. TRENCHES WITHIN GDOT RIGHT-OF-WAY SHALL BE COMPACTED TO 100 PERCENT OF MAXIMUM DRY DENSITY.

**UNPAVED AREAS**



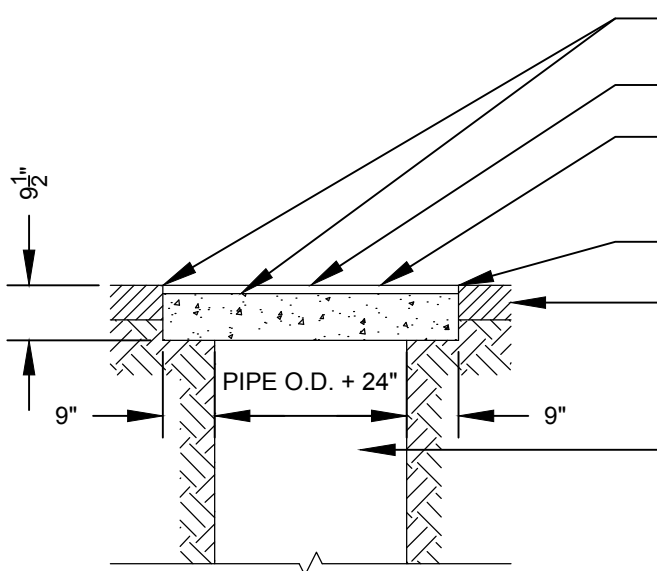
8" CLASS 1 HIGH EARLY STRENGTH CONCRETE CONFORMING TO GDOT STANDARD SPECIFICATION SECTION 430 (3,000 PSI AT 28 DAYS)

SAW CUT EDGES (STRAIGHT LINES)

EXISTING CONCRETE PAVEMENT (THICKNESS VARIES)

SELECT EARTH BACKFILL PLACED IN 6" LIFTS AND COMPACTED TO MINIMUM 95 PERCENT OF MAXIMUM DRY DENSITY IN ACCORDANCE WITH ASTM D698.

**CONCRETE PAVEMENT**



APPLY TACK COAT TO CONCRETE AND EDGES OF EXISTING ASPHALT

1 1/2" 9.5-mm SUPERPAVE

8" CLASS 1 HIGH EARLY STRENGTH CONCRETE CONFORMING TO GDOT STANDARD SPECIFICATION SECTION 430 (3,000 PSI AT 28 DAYS)

SAW CUT EDGES (STRAIGHT LINES)

EXISTING ASPHALT PAVEMENT (THICKNESS VARIES)

SELECT EARTH BACKFILL PLACED IN 6" LIFTS AND COMPACTED TO MINIMUM 95 PERCENT OF MAXIMUM DRY DENSITY IN ACCORDANCE WITH ASTM D698.

**ASPHALT PAVEMENT**

PEACHTREE CITY WATER & SEWERAGE AUTHORITY STANDARD DETAIL

**TRENCH REPAIR**

REVISED: 08/31/2015

SCALE: N.T.S.

DETAIL NO.

**111**