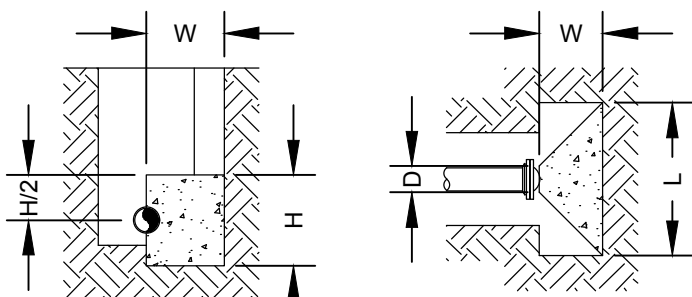


BEND PLAN

TEE PLAN



SECTION

DEAD-END PLAN

NOTES:

- THRUST BLOCK DIMENSIONS ARE BASED ON THE FOLLOWING DESIGN CRITERIA.

WORKING PRESSURE = 150 PSI
 SOIL BEARING CAPACITY = 2,000 PSF
 SAFETY FACTOR = 1.5

THESE ARE THE MINIMUM DESIGN CRITERIA. IF ACTUAL WORKING PRESSURE IS GREATER THAN 150 PSI OR IF ACTUAL SOIL BEARING CAPACITY IS LESS THAN 2,000 PSF, DIMENSIONS SHALL BE RECALCULATED.

- THRUST BLOCK CONCRETE SHALL HAVE A MINIMUM 28 DAY COMPRESSIVE STRENGTH OF 2,500 PSI.
- THRUST BLOCK SHALL BEAR AGAINST UNDISTURBED SOIL.
- A MINIMUM 10 MIL PLASTIC SHEET SHALL BE PLACED BETWEEN CONCRETE AND PIPE.
- ALL BOLTS SHALL REMAIN ACCESSIBLE. DO NOT COVER WITH CONCRETE.

TEES AND DEAD-ENDS						
PIPE DIA. (IN)	D DIM.	L DIM.	H DIM.	W DIM.	CONC. VOLUME (YD ³)	THRUST (LBF)
4	0'-6"	2'-2"	1'-1"	10	0.04	4,072
6	0'-8"	3'-0"	1'-6"	1'-2"	0.12	8,413
8	0'-10"	3'-10"	1'-11"	1'-6"	0.25	14,473
10	1'-0"	4'-8"	2'-4"	1'-10"	0.45	21,773
12	1'-2"	5'-8"	2'-10"	2'-3"	0.81	30,791
14	1'-4"	6'-6"	3'-3"	2'-7"	1.22	41,367
16	1'-6"	7'-4"	3'-8"	2'-11"	1.75	53,502
18	1'-8"	8'-4"	4'-2"	3'-4"	2.57	67,196
20	1'-10"	9'-2"	4'-7"	3'-8"	3.42	82,448
24	2'-2"	11'-0"	5'-6"	4'-5"	5.92	117,628

90° BENDS						
PIPE DIA. (IN)	D DIM.	L DIM.	H DIM.	W DIM.	CONC. VOLUME (YD ³)	THRUST (LBF)
4	0'-6"	2'-6"	15	12	0.07	5,758
6	0'-8"	3'-6"	1'-9"	1'-5"	0.19	11,898
8	0'-10"	4'-8"	2'-4"	1'-11"	0.46	20,468
10	1'-0"	5'-8"	2'-10"	2'-4"	0.82	30,792
12	1'-2"	6'-8"	3'-4"	2'-9"	1.33	43,545
14	1'-4"	7'-8"	3'-10"	3'-2"	2.02	58,502
16	1'-6"	8'-10"	4'-5"	3'-8"	3.10	75,663
18	1'-8"	9'-10"	4'-11"	4'-1"	4.28	95,029
20	1'-10"	10'-10"	5'-5"	4'-6"	5.72	116,599
24	2'-2"	13'-0"	6'-6"	5'-5"	9.89	166,352

45° BENDS						
PIPE DIA. (IN)	D DIM.	L DIM.	H DIM.	W DIM.	CONC. VOLUME (YD ³)	THRUST (LBF)
4	0'-6"	1'-10"	11	8	0.03	3,116
6	0'-8"	2'-8"	1'-4"	1'-0"	0.08	6,439
8	0'-10"	3'-4"	1'-8"	1'-3"	0.16	11,077
10	1'-0"	4'-2"	2'-1"	1'-7"	0.32	16,664
12	1'-2"	5'-0"	2'-6"	1'-11"	0.55	23,566
14	1'-4"	5'-8"	2'-10"	2'-2"	0.80	31,661
16	1'-6"	6'-6"	3'-3"	2'-6"	1.20	40,949
18	1'-8"	7'-4"	3'-8"	2'-10"	1.73	51,429
20	1'-10"	8'-0"	4'-0"	3'-1"	2.25	63,103
24	2'-2"	9'-6"	4'-9"	3'-8"	3.76	90,029

22½° BENDS						
PIPE DIA. (IN)	D DIM.	L DIM.	H DIM.	W DIM.	CONC. VOLUME (YD ³)	THRUST (LBF)
4	0'-6"	1'-4"	8	5	0.01	1,589
6	0'-8"	1'-10"	0'-11"	0'-7"	0.02	3,283
8	0'-10"	2'-6"	1'-3"	0'-10"	0.06	5,647
10	1'-0"	3'-0"	1'-6"	1'-0"	0.11	8,495
12	1'-2"	3'-6"	1'-9"	1'-2"	0.18	12,014
14	1'-4"	4'-2"	2'-1"	1'-5"	0.30	16,141
16	1'-6"	4'-8"	2'-4"	1'-7"	0.42	20,875
18	1'-8"	5'-2"	2'-7"	1'-9"	0.57	26,218
20	1'-10"	5'-10"	2'-11"	2'-0"	0.83	32,170
24	2'-2"	6'-10"	3'-5"	2'-4"	1.33	45,896

PEACHTREE CITY WATER & SEWERAGE AUTHORITY STANDARD DETAIL

CONCRETE THRUST BLOCK

REVISED: 08/31/2015

SCALE: N.T.S.

DETAIL NO.

116